

HOW TO ACTIVATE YOUR CLUB WITH

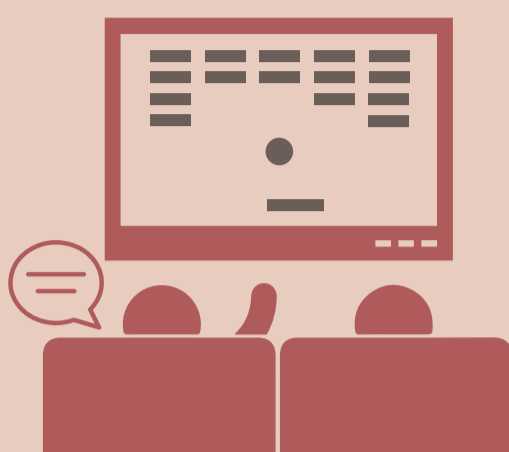


NASEF

NORTH AMERICA SCHOLASTIC
ESPORTS FEDERATION™

FOR STUDENTS

Are you trying to start an esports Club? Looking to grow your gaming Club on campus or in a community based-organization? NASEF offers free tools and support. Follow this step-by-step guide to activate your Club and join NASEF.



STEP 1



Find an advisor to support your Club! It can be a teacher, a school administrator, a school counselor, or director at your high school or community-based organization.

STEP 2

Complete the form on the [activation page](#). You'll need contact info for your advisor, your General Manager, and a school or community-based organization administrator.



STEP 3



Activation begins. The General Manager will start receiving emails about club activation. Your administrator will also receive an email to confirm that they support your Club.

STEP 4

Build your Club. The General Manager is responsible for the roster. To be added, provide your and your parent or guardian's info to the GM. Your GM will also be checking for **Student Eligibility**, so make sure you meet those requirements!



THAT'S IT.



After you complete all the necessary forms, your Club will receive free access to the Club Portal for toolkits and other resources. You'll also have access to League Competition information for this season. **GLHF!**

For more information, visit esportsfed.org
or email us at info@esportsfed.org